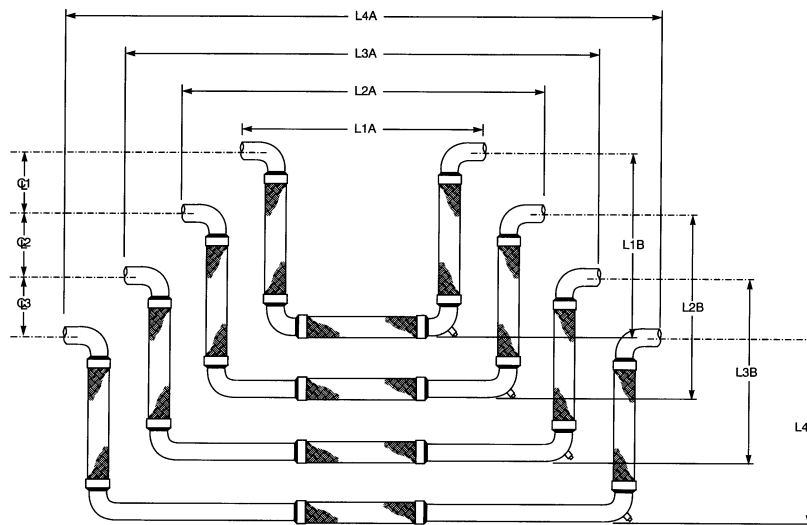


Nested *Tri-Flex Loop™ Worksheet

Any number of *Tri-Flex Loops™ can be grouped to reduce installation space requirements. There are several factors to consider during the layout design. By completing this sheet we will be able to determine the necessary factory modifications required to the outer *Tri-Flex Loops™ in order to assure each is free to move as required. If there are other obstructions (i.e. framing or equipment) their location should also be noted on the sketch. The “A” and “B” dimensions will be provided by Flex-Hose Co., all other information is to be completed by the Engineer or Contractor.

SPECIAL NOTE: L1A is always the innermost *Tri-Flex Loop™.



* US Patent No. 5,803,506

Location of nest and any special notes: _____

Tag	Pipe Size	End Fitting	Media	Movement	Maximum Service		Insulation Thickness	“A” End to End	“B” Center of Pipe to Bottom of Tri-Flex Loop	Centerline Distance Between Pipe Lines
					Temp °F	PSI				
								L1A	L1B	CL1
								L2A	L2B	CL2
								L3A	L3B	CL3
								L4A	L4B	

Customer	
Project	
Engineer	
Architect	
Inquiry or P.O.#	