

# Tri-Flex Loop® Expansion Loops and Seismic Connectors



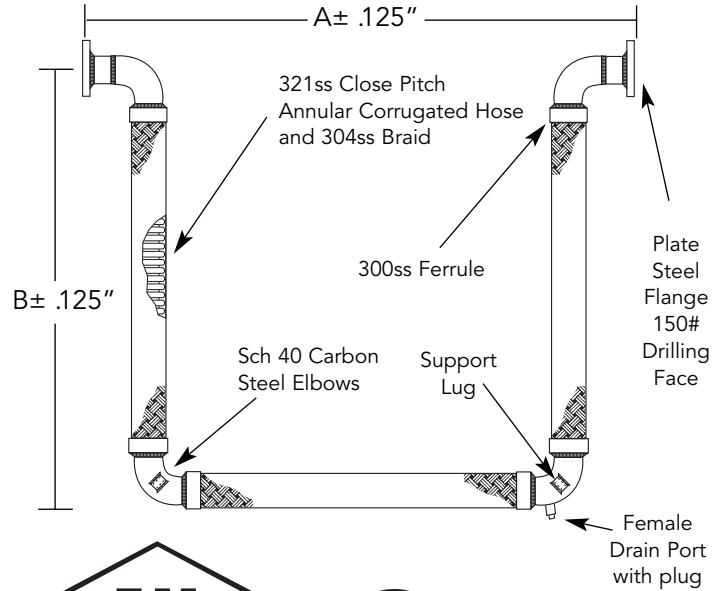
I.D. (IN.)	LENGTH (IN.)		PRESSURE (PSI) @ Ambient Temperature	MOVEMENTS						DRAIN PORT	SPRING RATE @ 125PSI	WT. (LBS)
	A	B		COMPRESSION (IN.)	EXTENSION (IN.)	PARALLEL (IN.)	ROTATION "X" AXIS (°)	NON-PARALLEL "Y" AXIS (IN.)				
<b>TFL2SMP</b>												
1.0	21.50	15.75	175	2	2	2	20°	1	½	7	10	
1.25	25.50	18.00	175	2	2	2	15°	1	½	9	12	
1.50	27.50	19.50	175	2	2	2	15°	1	½	10	17	
2.0	31.50	22.25	175	2	2	2	10°	1	½	13	22	
2.5	35.50	25.00	175	2	2	2	10°	1	¾	23	37	
3.0	39.75	28.00	175	2	2	2	10°	1	¾	33	48	
4.0	43.25	33.00	175	2	2	2	5°	1	¾	53	79	

Manufactured with 5:1 safety factor. All Tri-Flex Loops are 100% hydrostatic tested at the factory to 262 psig.



## LISTED

Tri-Flex Loop® Stainless steel 1"-4" for compressed and combustible gases at pressures not exceeding 175 psi at ambient temperature. The term combustible gases, as used herein, means gases such as liquefied petroleum gases, and manufactured and natural gases. 33NB



APPROVED

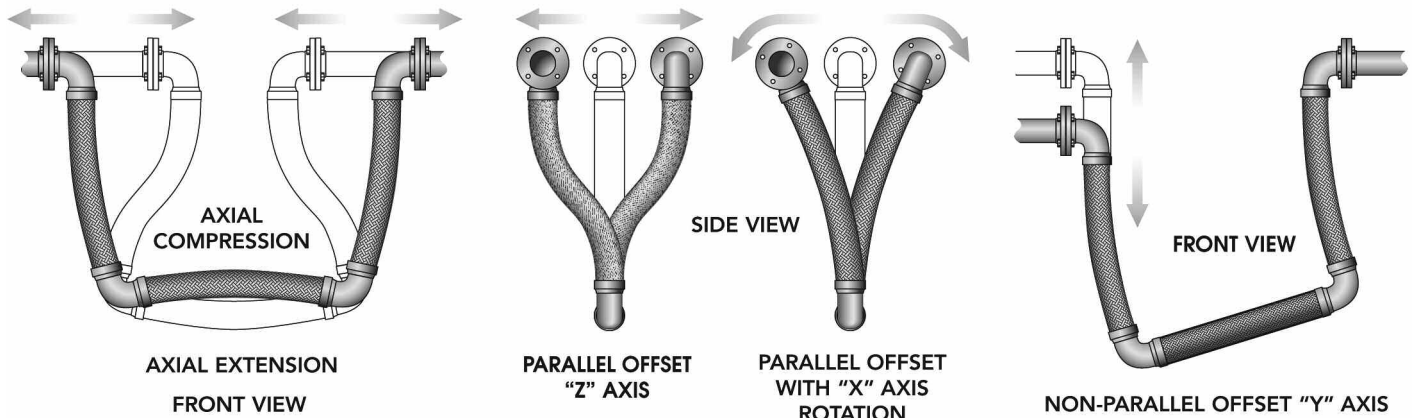
For Fire Protection Systems



CSA standard B-51 certified. Inspected and tested by the Technical Standards and Safety Authority of Canada.

## Tri-Flex Loop® Movement Capabilities

Tri-Flex Loop is capable of handling the following movements simultaneously:



PROJECT	
CUSTOMER	
ENGINEER	
REPRESENTATIVE	
DRAWING #	



4560 Buckley Road  
 Liverpool, NY USA 13088-2509  
 315/437-1611 • Fax 315/437-1903  
[www.flexhose.com](http://www.flexhose.com) • 1.877.TRI FLEX