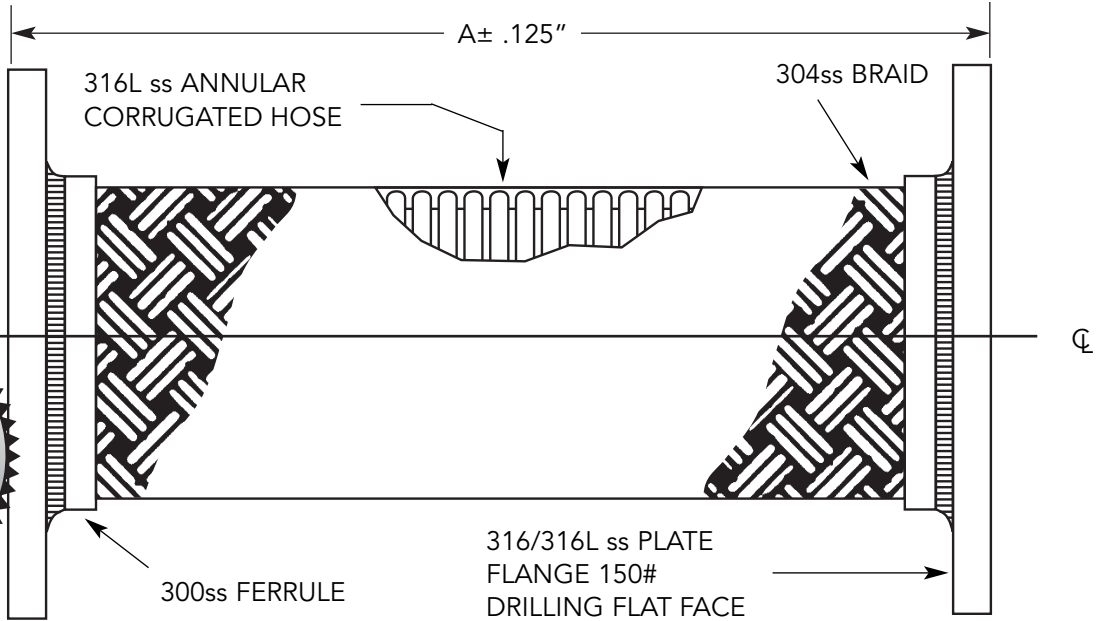


# Pumpsaver® Braided Pump Connectors



| FOR TEMP ABOVE 70°F |                 |
|---------------------|-----------------|
| TEMP °F             | FACTOR 316 S.S. |
| 70                  | 1.00            |
| 200                 | .92             |
| 300                 | .86             |
| 400                 | .82             |
| 500                 | .77             |
| 600                 | .73             |

| Qty. | I.D (in.) | A (in.) | Pressure (PSI) 70° F | Parallel Offset (in.) |              | Weight (lbs.) | Notes |
|------|-----------|---------|----------------------|-----------------------|--------------|---------------|-------|
|      |           |         |                      | Permanent             | Intermittent |               |       |
|      | 2.00      | 9.00    | 500                  | 1 1/8                 | 3/8          | 10            |       |
|      | 2.50      | 9.00    | 400                  | 1                     | 3/8          | 12            |       |
|      | 3.00      | 9.00    | 285                  | 5/8                   | 1/4          | 14            |       |
|      | 4.00      | 9.00    | 250                  | 1/2                   | 1/4          | 19            |       |
|      | 5.00      | 11.00   | 200                  | 3/4                   | 3/8          | 25            |       |
|      | 6.00      | 11.00   | 220                  | 5/8                   | 1/4          | 30            |       |
|      | 8.00      | 12.00   | 200                  | 1/2                   | 1/4          | 54            |       |
|      | 10.00     | 13.00   | 200                  | 1/2                   | 1/4          | 75            |       |
|      | 12.00     | 14.00   | 160                  | 1/2                   | 1/4          | 105           |       |
|      | 14.00     | 14.00   | 140                  | 3/8                   | 1/8          | 135           |       |
|      | 16.00     | 14.00   | 110                  | 3/8                   | 1/8          | 170           |       |

\*For safe working pressure above 70°F, multiply pressure shown at 70°F times correction factor of required temp.

\*Working pressures shown for the hose and braid are based on an operating temperature of 70°F (21°C) with a 4:1 safety factor.



CSA standard B-51 certified. Inspected and tested by the Technical Standards and Safety Authority of Canada.



This product is listed by IAPMO R&T under file #N-7208 for NSF/ANSI 61 and file 7207 for California Lead Plumbing Law and NSF/ANSI-372. Our listed products can be viewed on IAPMO R&T's Web listing at <http://pld.iapmo.org>

|                |  |
|----------------|--|
| PROJECT        |  |
| CUSTOMER       |  |
| ENGINEER       |  |
| REPRESENTATIVE |  |
| DRAWING #      |  |



4560 Buckley Road  
 Liverpool, NY USA 13088-2509  
 315/437-1611 • Fax 315/437-1903  
[www.flexhose.com](http://www.flexhose.com) • 1.877.METAL EJ